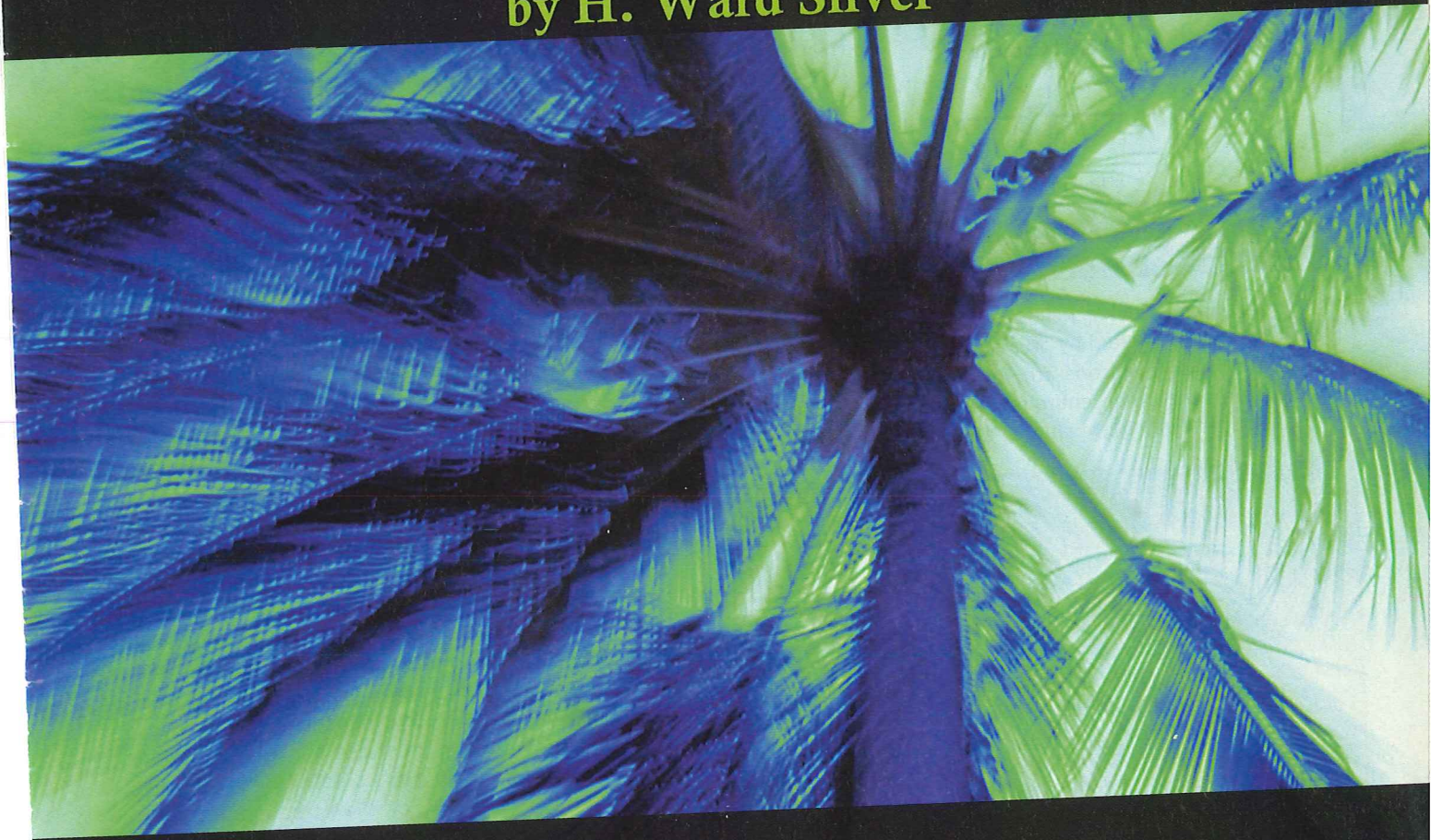


CAPACITORS

The Family Tree

by H. Ward Silver



Open a parts vendor's catalog to the capacitor section and you'll find an amazing variety of choices. Why are there all these different types? Rest assured that there are perfectly good reasons for each. In this article, I'll explain why and how to tell what type is right for your project.

CAPACITOR FUNDAMENTALS

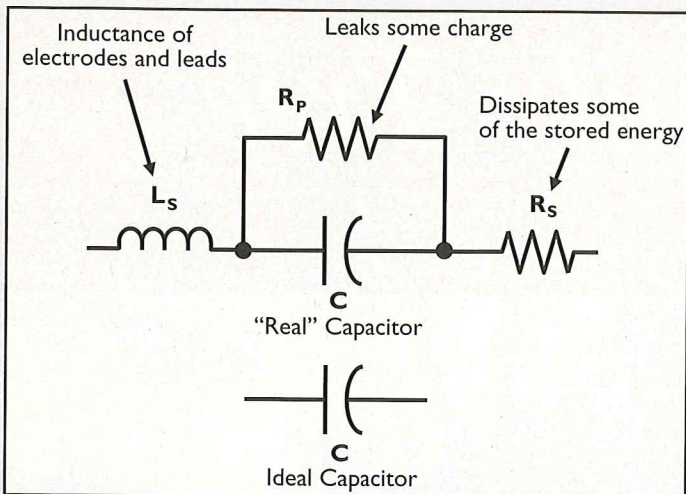


FIGURE 1. The model for a real capacitor includes inductance and loss that affect its performance.

A capacitor is just a pair of conducting plates (electrodes) that are separated by an insulator (dielectric). When voltage is applied, electrons are forced onto one plate and removed from the other, charging the capacitor and creating an electric field between the electrodes. The electric

field's energy is stored in the capacitor's dielectric. All capacitor types are just variations on this general theme.

Capacitance is the measure of the amount of energy that the capacitor stores for a given amount of charge and voltage. The area of the electrodes and the material used for the dielectric determine the capacitor's ability to store energy. More area or a thinner dielectric increases capacitance. Like resistors, a capacitor's value has a certain precision that shows how close the capacitance must be to the labeled or nominal value.

DC will not flow between the two electrodes as long as the dielectric material can withstand the applied voltage. AC is considered to flow between the plates as the electrons flow onto and off of the electrodes. Energy is stored and removed from the dielectric with each half-cycle. Like juggling two balls from hand to hand, there is a lot of energy transferred, but no net change. As the capacitor charges, the building voltage opposes the flow of additional charge. This opposition to current flow is called reactance and is abbreviated X_C . (X_L is inductive reactance.)

The materials used to make the capacitor and their physical configuration cause some variation from the ideal capacitor. The size of the electrodes and the leads used to connect them to circuits introduce a small amount of parasitic inductance. Dielectric materials dissipate a small amount of the stored energy. There is also a little leakage current between the electrodes whenever voltage is present.

These extra and unwanted effects are shown in Figure 1 as the model of a real capacitor. The parasitic inductance (called ESL for Equivalent Series Inductance) is represented by L_s , leakage by resistor R_p , and dissipation by resistor R_s . (The 's' and 'p' stand for series and parallel.) This model works well enough to represent capacitors over most frequencies and for all but the most demanding applications.

Parasitic inductance is quite small, from picohenries to a few nanohenries. At DC and low frequencies, L_s can

SAFETY IN

Primary Circuits

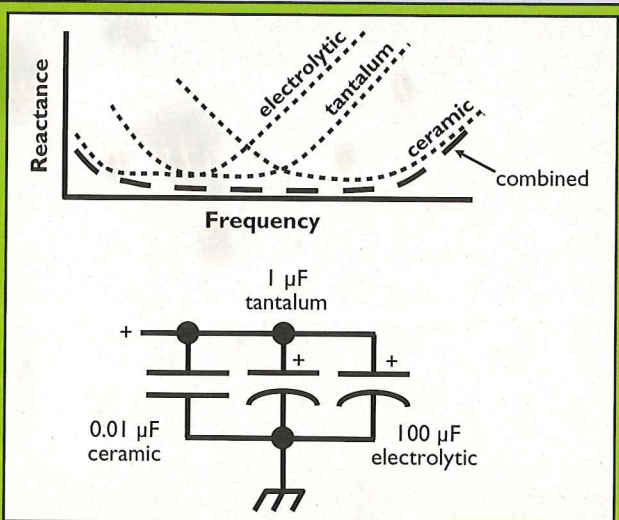
If your application requires a capacitor to connect directly to the AC power line (such as filtering), select a capacitor rated specifically for that use. These capacitors are rated by a safety agency such as Underwriter Labs (UL), CSA (Canada), or VDE (Europe) for "across the line" use. They are designed to be "fail safe" and not cause hazards to equipment users. The additional cost is minimal.

HOW TO

Make a Perfect Capacitor

There is no one perfect capacitor type for all applications, but you can make several types share their best characteristics. For example, power supplies for digital electronics need filters that take out everything from low-frequency ripple all the way up to switching transients at hundreds of MHz. Since no single capacitor is suitable, the "perfect" capacitor is made as shown in Figure 2. The electrolytic takes care of low-frequency ripple, the tantalum medium frequencies, and finally the ceramic cap takes care of everything up into the VHF range.

FIGURE 2. The "perfect capacitor" is made by combining the best characteristics of three different types of capacitor.



CAPACITOR FUNDAMENTALS

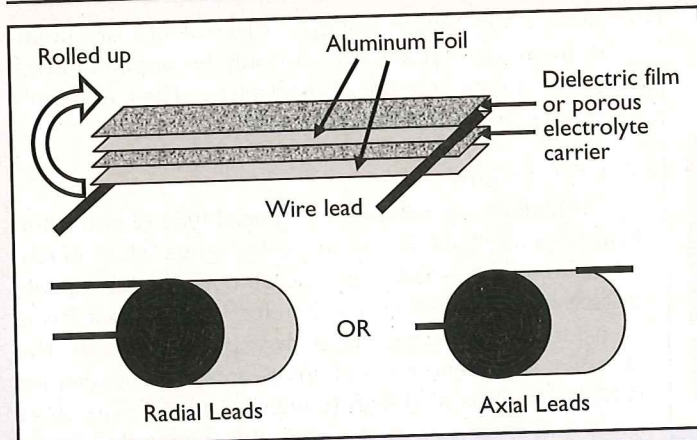


FIGURE 3. Roll capacitors are made from strips of metal and dielectric materials rolled into a cylinder.

be ignored, but as the frequency increases, so does its reactance. In fact, at a sufficiently high frequency, L_s and C form a series-resonant circuit. This is the self-resonant frequency, f_0 of the capacitor. Above f_0 , the capacitor acts more like a small inductor! R_s (also called ESR for Equivalent Series Resistance) acts just like a separate resistor, dissipating a little energy as heat when current flows. R_s can be as high as several tens of ohms, but is generally only important when the capacitor current is high. R_p provides a leakage path for current across the dielectric and is typically in the megohms. You can ignore

R_p except in very low-power and high-impedance circuits.

There are two common ways of efficiently making capacitors: the Roll and the Stack. Figure 3 shows a typical roll capacitor — two strips of very thin aluminum foil separated by a dielectric. After leads are attached to the foil strips, the sandwich is rolled up and either placed in a metal can or coated with plastic. Radial leads both stick out of one end. Axial leads stick out from both ends along the roll's axis. Because of the long rolled strips, the roll capacitor's L_s is high.

Temperature Coefficient

The materials that make up a capacitor expand and contract with temperature, meaning that the capacitance changes with temperature, as well. In many applications, such as IC bypassing or DC blocking, a change of a few percent is of no concern. However, in a timing circuit or an oscillator, it's a big deal!

A capacitor's change in value with temperature is called its temperature coefficient or tempco and is denoted by an industry standard code. (The nominal value is specified at 25°C.) The three most common tempcos are:

Z5U = +22%/-56% change over -10°C to +85°C
 X7R = ±15% change over -55°C to +125°C
 NP0 = 0±30 ppm/°C over -55°C to +125°C

As you can see, the Z5U rating allows quite a bit of change, but these are inexpensive capacitors used for garden variety applications or where temperature won't be changing much. The NP0 (that's a zero, not a capital O) capacitors are only used where holding a steady value is important. You can find a nice display of temperature coefficients at www.niccomp.com/Products/TC_Ceramics.pdf

HOW BIG

Is a FARAD?

One farad (1 F) is a large value as capacitors go, but what does that mean? Well, if a 1 F capacitor is charged up to 12 V, it contains enough energy to accelerate a 165-gram Frisbee™ to 67 miles per hour! That's a pretty stiff toss! Similarly, to get that 1 F of capacitance, two plates separated by air and only 1/10 mm apart would have to be 11,300,000 square meters in area! That's 4.36 square miles!

ZigBee/802.15.4

for OEMs and Integrators

XBee & XBee-PRO

Interchangeable - 1mW & 100mW
 Extremely Low Power
 Ranges up to 0.9 Miles
 Worldwide Agency Approvals

Order Today!

RF modules starting at \$19



Stand-alone RF modems for \$99



MaxStream®

www.maxstream.net • toll free (866) 765-9885

Circle #96 on the Reader Service Card.

■ CAPACITOR FUNDAMENTALS

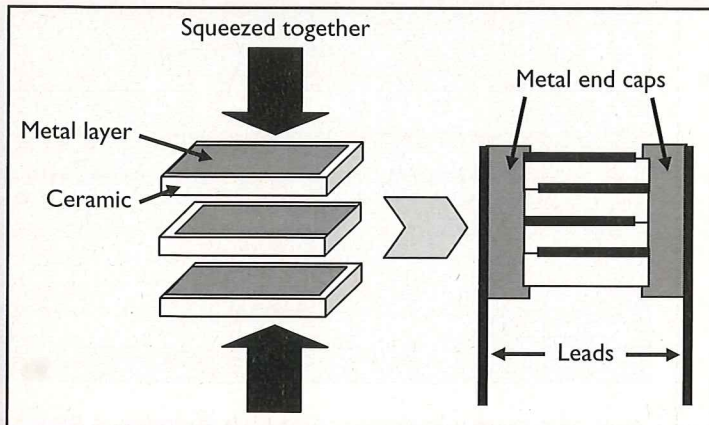


FIGURE 4. Stack capacitors are made from an alternating stack of insulating and metallic layers.

Figure 4 shows a stack capacitor. The most common dielectric (as shown) is ceramic. Each piece of ceramic is coated with a thin metal layer on one side. The stack is oriented so that the metal layers only touch one side, alternating in each layer. The stack is then placed under pressure and heated (called sintering) to make a single solid piece of material. Metal end caps with leads are attached to each side of the stack, contacting the metal layers. The whole capacitor is then coated with an epoxy resin. The L_S of stack capacitors is very low.

ELECTROLYTIC

The most common type of roll capacitor is the aluminum electrolytic. The dielectric is a porous layer of paper-like fiber, impregnated with a chemical gel that acts as a dielectric. Electrolytics have very high capacitance for their volume, but also have high L_P and R_S (lossy), and are relatively leaky (low R_P). They can be made to

withstand substantial voltages. Electrolytics are polarized, meaning that voltage can only be applied in one way due to the chemical electrolyte. They generally have very broad tolerances of $\pm 20\%$.

TANTALUM

Tantalum capacitors are a special type of capacitor. Instead of a roll of foil, an extremely porous "slug" of tantalum makes one electrode and an outer metal capsule the other. The dielectric is a chemical solution that forms an oxide coating on the tantalum slug for insulation. The slug has a tremendous amount of area, so capacitance is high, but R_S is also high (somewhat lossy). The short leads and small size of the capacitor means that tantalums have low L_S . The maximum applied voltage for tantalums is under 100 V. Like electrolytics, they are polarized and have broad tolerances of $\pm 20\%$.

FILM

Film capacitors have a plastic film dielectric; polyethylene and polycarbonate are the most common. Most film capacitors are of roll construction, so L_S is moderate although stack types are not unknown. Film capacitors are non-polarized. R_P is high (low leakage) and R_S is low (low loss). Special types of film are used for highly stable capacitance values or extremely low leakage. Precision film capacitors of 5% tolerance or better are available. See www.filmcapacitors.com/specsum.htm for a good table summarizing the different types of film capacitors.

CERAMIC

By far the most common form of capacitor used, ceramic capacitors are used in high-frequency applications. Stack construction keeps L_S extremely low so they are useful at frequencies of hundreds of MHz. They are

Choosing Capacitors

Now that you know more about the types of capacitors, here is a list of common applications and the types of capacitors used in them. The reason that type is chosen is shown in parentheses.

- Power supply filtering (60 Hz) — electrolytic (high value, low cost)
- Switching power supply filtering — electrolytics with low ESR and low ESL, film (high frequency current handling)
- Power bus filtering — tantalum and electrolytic (good medium and high-frequency characteristics)
- Digital IC bypassing — ceramic (excellent high frequency characteristics)

- Timers and oscillators — polystyrene film or NP0 ceramic (stability and precision)
- Audio filters and amplifiers — film (low-loss and small)
- Analog-to-digital conversion — low-leakage film (stability and precision)
- RF filters — silvered-mica, air variable, or transmitting ceramic (low-loss and stable)

The important thing to remember in order to make the correct capacitor choice is to think about what is important for your circuit — value, stability, cost, loss — and choose a capacitor type that meets those requirements.

CAPACITOR FUNDAMENTALS

low-loss (low R_s) and have good leakage characteristics (moderate R_p). Ceramic capacitors are very rugged and pack a lot of capacitance into a small package. Ceramics are non-polarized and have a wide range of tolerances.

MICA AND GLASS

You will occasionally find silvered-mica and glass capacitors in RF and transmitting equipment due to their extremely low loss (low R_s and high R_p) and low L_s . A variation on the ceramic stack, mica and glass dielectric layers are used instead of ceramic. They cannot be sintered like ceramic, so this limits the capacitance that can be obtained. Both types typically have a 5% tolerance.

ADJUSTABLE

If you take apart an old radio, behind the tuning knob you'll see an air-variable capacitor with closely-spaced metal plates. While these are typically small in value (1,000 pF or less), they are adjustable. Air variables are stable and low-loss, working very well at RF. An adjustable variation of the mica capacitor in which the stack is squeezed by a screw is called a compression trimmer. Ceramic and plastic variables are also available with values of up to several hundred pF. **NV**

About the Author

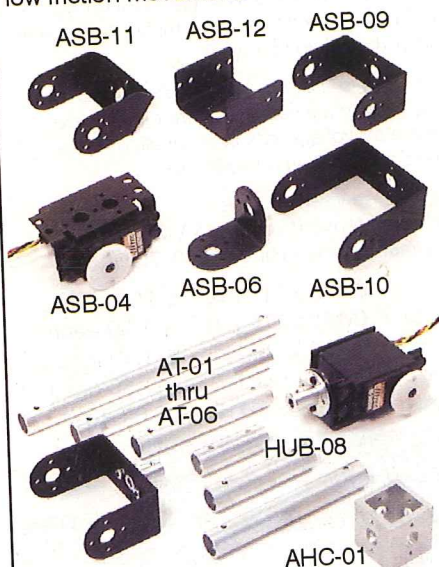
H. Ward Silver is an engineer, writer, and teacher with over 30 years of practical experience in medical electronics, instrumentation design, and broadcasting. He is the author of *Ham Radio for Dummies* by Wiley Press and numerous articles for *QST Magazine*. Ward's ham radio call sign is **NØAX**.

For Further Reading

By now, you're aware that there's a lot more to a capacitor than its capacitance. To learn more, browse the Capacitor Term Glossary at www.capacitorindustries.com/glossary.htm The information at <http://xtronics.com/kits/ccode.htm> will help you decipher capacitor value markings. A whole web page full of links about capacitors can be found at www.hallbar.com/capacitors.html If you are really interested and can find a copy, *The Capacitor Handbook* by Kaiser (CJ Publishing, 2851 W. 127th St., Olathe, KS 66061) is an authoritative, but easy-to-read reference.

Servo Erector Set... Build It!

High quality brushed or black anodized aluminum brackets, hubs, and tubing, make sturdy lightweight assemblies. Ball Bearings are included for precise, low friction movement.



We have short tutorials on the website illustrating how to build the mechanical assemblies. It's easy to make pan & tilts, 2 to 6 DOF legs, robotic arms, even robot skeletons. Build almost anything robotic!

Lynxmotion Build Something!



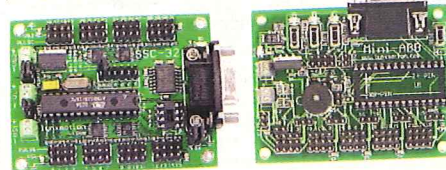
Walking Stick!
19.5"L x 15"W

Walking Stick was built exclusively from our Servo Erector Set. All aspects can be modified to suit your needs.

Visit our website to see the complete Lynxmotion series of Robot kits and parts.
www.lynxmotion.com
Toll Free: 866-512-1024

Bot Board/SSC-32 Control It!

The Bot Board is a Basic Atom or BS-2 carrier that is perfect for small robots. We have sensors and other peripherals that plug right in. Many more features...



The SSC-32 is the state-of-the-art in servo controllers, and it's only \$39.95!

- 32 channels, rock steady 1uS res.
- 500uS to 2.500uS range.
- RS232 or TTL level communication.
- Speed, Timed, or Group Moves.
- Flawless 8 state 12 servo hexapod gait sequence engine, runs in background.
- EEPROM socket for expansion.

Huge selection of kits and parts!

Low prices as well!

